

Weight: 74 kg/ply

BRACINGS ACCORDING TO TIMBER TABLE AND STABILITY OF THE TRUSS SYSTEM SHALL BE DESIGNED SEPARATELY

GENERAL DIRECTIONS:

CODE TIMBER: EN 1995-1-1:2004 + SS-NA
 LOADS: EN 1991 + SS-NA
 FULL DESIGN RESULTS AS PER CALC. PRINT-OUT

GENERAL SETTINGS:

TIMBER THICKNESS: (mm) 50
 TRUSS CENTRES: (mm) 600
 CLIMATE CLASS: 2
 BRACING: SEE TIMBER TABLE

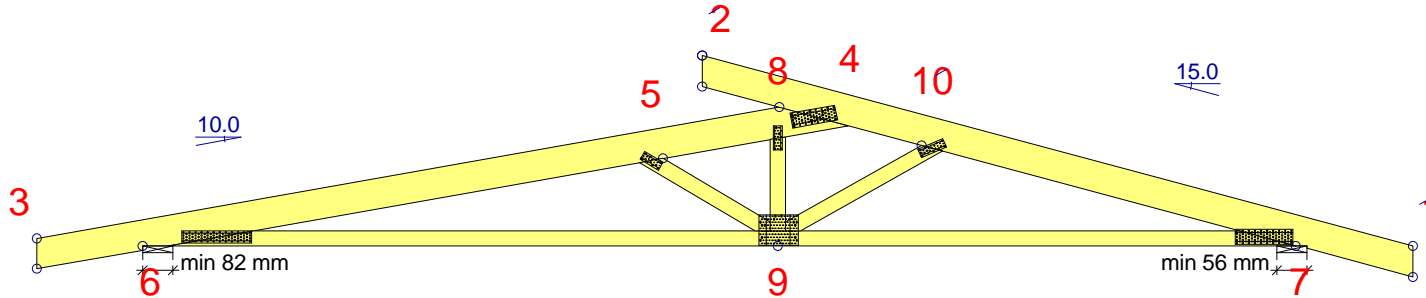
LOADS (N/m²):

SNOW LOAD (BASE VALUE): 1600
 WIND LOAD (BASE VALUE): 640

DEAD LOADS: SEE TIMBER TABLE
 OTHER LOADS AS PER CALC. PRINT-OUT

SUPPORT REACTIONS (N) (ULTIMATE):

JOINT NO	DIR.	LC P MAX	LC M MAX	LC S MIN	LC S MAX	SUP-W. MM
6	Hori	0	0	-80	513	
6	Vert	4101	9386	1100	10106	82
7	Vert	4218	9586	1224	10153	56



FASTENER LOCATION TOLERANCE: 8 mm

TIMBER: THICKNESS 50 mm					
CONSTR.-PART	DEPTH mm	GRADE	BRACING mm	LOAD N/m²	CSI %
3-4	200	C18	400	650	78
1-2	200	C18	400	650	56
6-7	100	C18	Full	300	89
8-9	100	C18	None	150	9
5-9	100	C18	None		13
9-10	100	C18	None		8

FASTENERS - SPLICES EXCL:					
JOINT NO	PLATE TYPE	WIDTH mm	LENGTH mm	CSI %	
4	BMF1.5	100	300	97	
5	BMF1.5	60	140	89	
6	BMF1.5	80	460	97	
7	BMF1.5	100	380	98	
8	BMF1.5	60	160	77	
9	BMF1.5	260	200	98	
10	BMF1.5	60	180	83	

FASTENERS - SPLICES:					
JOINT NO	PLATE TYPE	WIDTH mm	LENGTH mm	CSI %	

MAX DEFORMATION (mm) (SERVICEABILITY):

JOINT NO	VERT.	HORIZ.	LC NO.
6-9	17.7	1.2	18 (6.15fin)
2	15.6	-0.4	17 (Winst)
1	-3.1	4.2	17 (Winst)

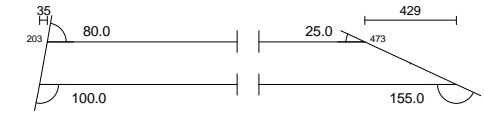
FOR DEFORMATION AT OTHER POINTS - SEE CALC.PRINTOUT

DRAWN CONSTR.BY CHECKED JOB NO.

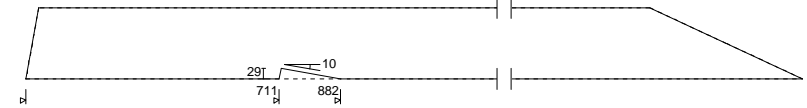
CODE TYPE NO. DRAWING NUMBER REG.

TOPCHORD - T1

3 - 4
 Dim./Grade: 50 x 200
 Total length: 5450 mm
 Length centre: 5218 mm
 Qty per ply: 1 pcs
 Total qty: 18 pcs (18l)

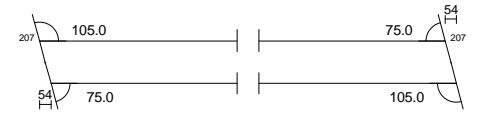


1:15

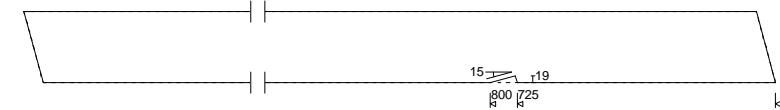


TOPCHORD - T2

2 - 1
 Dim./Grade: 50 x 200
 Total length: 4919 mm
 Length centre: 4866 mm
 Qty per ply: 1 pcs
 Total qty: 18 pcs (18r)

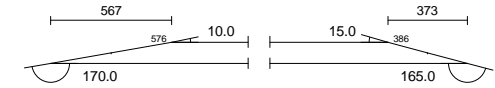


1:15



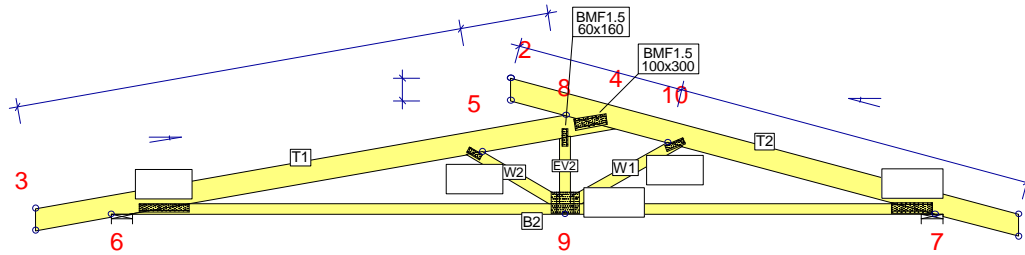
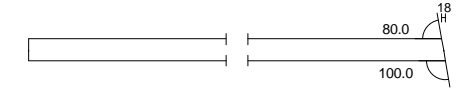
BOTT.CHORD - B2

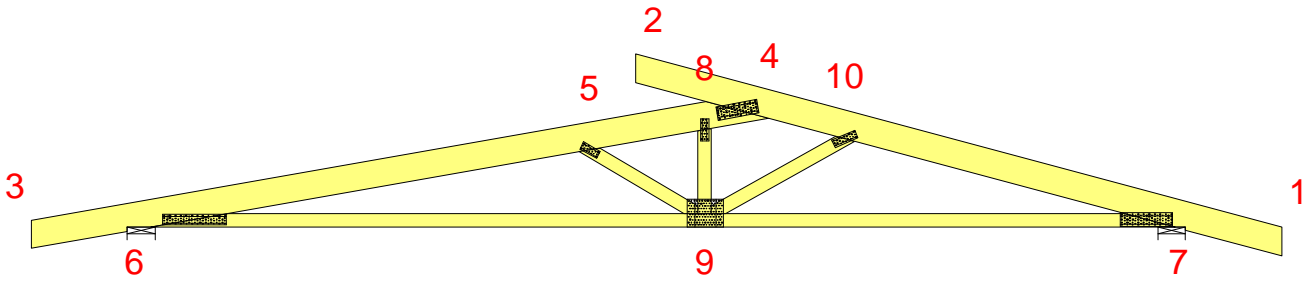
6 - 7
 Dim./Grade: 50 x 100
 Total length: 7459 mm
 Length centre: 6989 mm
 Qty per ply: 1 pcs
 Total qty: 18 pcs



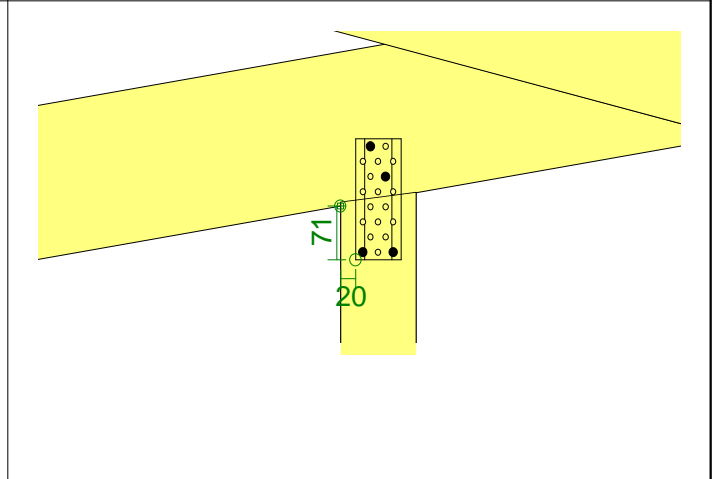
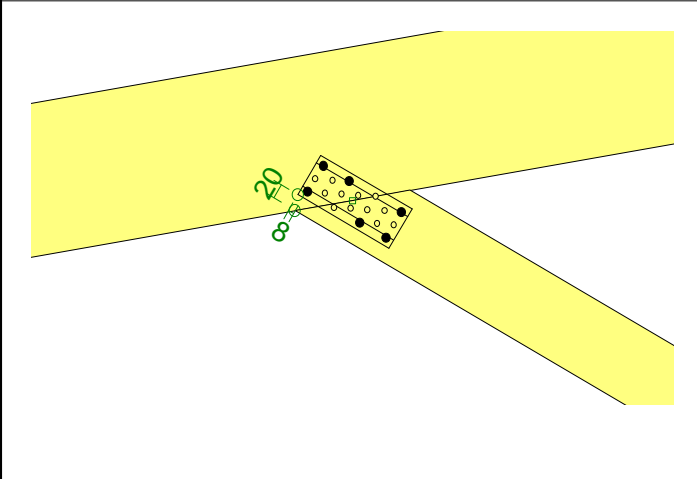
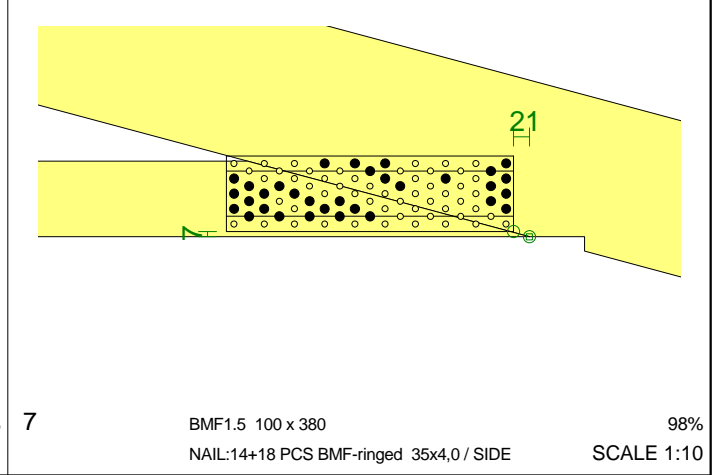
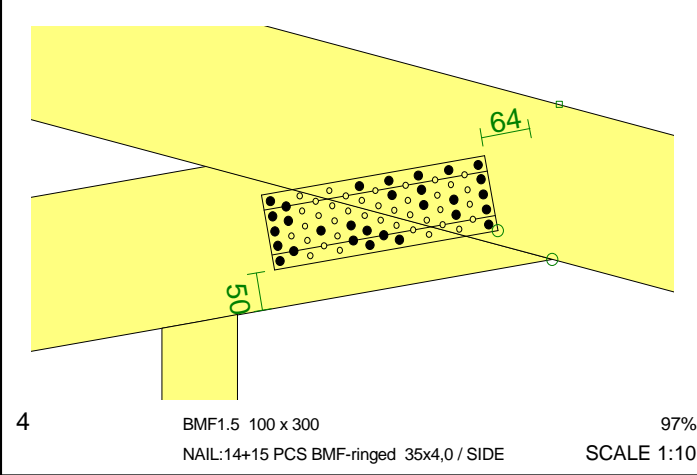
END-VERT. - EV2

9 - 8
 Dim./Grade: 50 x 100
 Total length: 620 mm
 Length centre: 611 mm
 Qty per ply: 1 pcs
 Total qty: 18 pcs (18r)





FASTENER LOCATION TOLERANCE: 8 mm



DRAWN CONSTR.BY	CHECKED	JOB NO.
NAILED FASTENERS		Page 1(2) SCALE 1:10
CODE TYPE NO.		DRAWING NUMBER
		REG.

NAILED FASTENERS		Page 1(2) SCALE 1:10
CODE TYPE NO.		DRAWING NUMBER
		REG.

Job number

Date :

PICK LIST

Dimension	Length Net	Qty.	Note
50 x 200 C18	5450 mm	18
50 x 200 C18	4919 mm	18
50 x 100 C18	7459 mm	18
50 x 100 C18	1164 mm	18
50 x 100 C18	972 mm	18
50 x 100 C18	620 mm	18

QUANTITY SUMMARY

Grade	Volume[m3] Net	Weight[kg]	Qty
C18		1392.89	108
Total		1392.89	108

Dimension	Length [m] Net	Cube [m3] Net
50 x 200 C18	186.64	1.866
50 x 100 C18		
Total		

FASTENER STOCK LIST

Qty	Type	Dimension
36	BMF1.5	60 x 140
36	BMF1.5	60 x 160
36	BMF1.5	60 x 180
36	BMF1.5	100 x 300

QUANTITY SUMMARY

Type	Area[dm2]	Weight[kg]	Qty
BMF1.5	668.16	78.68	252
Total	668.16	78.68	252

NAIL STOCK LIST

Qty	Type
4320	BMF-ringed 35x4,0